



Govt. College for Girls, Ludhiana



**RUSA Grant Under
Upgradation of Existing
Degree Colleges to Model
Degree Colleges
Component**

Utilization of RUSA Grant

- 1) Creations of New Facilities - (35% of Grant)**
- 2) Renovation / Upgradation of Existing Facilities -
(35% of Grant)**
- 3) Purchase of New Equipments - (30% of Grant)**

Summary of Utilization of RUSA Funds

Creation of New Facilities (35%)			
Total Received Grant	Total Expenditure	Unspent Balance	Utilization in Percentage
1,40,00,000/-	1,40,00,000/-	Nil	100%

Renovation/ Upgradation of existing facilities (35%)			
Total Received Grant	Total Expenditure	Unspent Balance	Utilization in Percentage
1,40,00,000/-	1,40,00,000/-	Nil	100%

New Equipments (30%)			
Total Received Grant	Total Expenditure	Unspent Balance	Utilization in Percentage
1,20,00,000/-	1,20,00,000/-	Nil	100%

Summary of Utilization of RUSA Funds

Vocationlisation of Higher Education

Total Received Grant	Total Expenditure	Unspent Balance	Utilization in Percentage
14,42,963/-	14,42,963/-	Nil	100%

Equity Initiative

Total Received Grant	Total Expenditure	Unspent Balance	Utilization in Percentage
5,00,010/-	5,00,010/-	Nil	100%

MMER

Total Received Grant	Total Expenditure	Unspent Balance	Utilization in Percentage
2,50,000/-	2,50,000/-	Nil	100%

Creations of New Facilities

(35% Total Budget)

RUSA Classrooms

Amt- 48,89,833/-





Washrooms



Rusa Seminar Hall (Amt-59,57,187/-)



Rusa Seminar Hall



Renovation / Upgradation
of Existing Facilities
(35% Total Budget)

Renovation of Science Labs (Flooring)



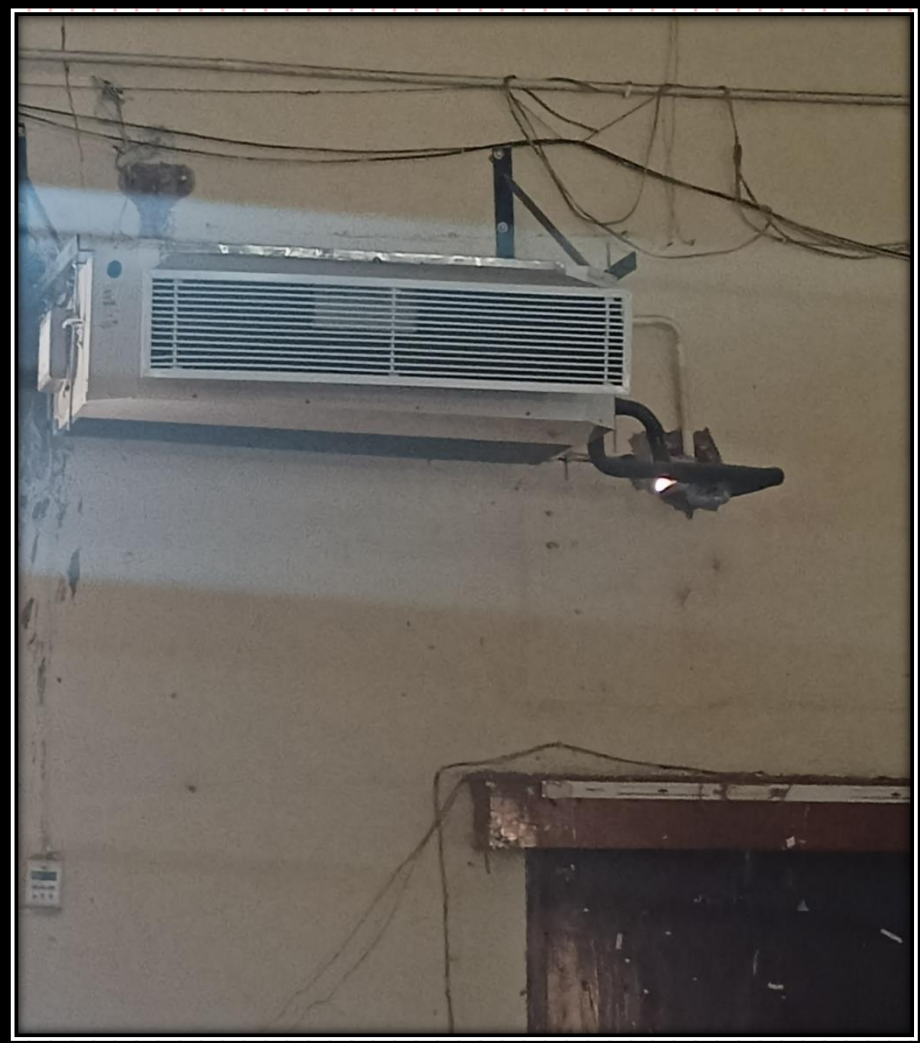
Construction of RAMP



Solar Water Heater Systems (In Hostel)



Air Conditioners (In Auditorium)



Renovation of Green Rooms in Auditorium (Flooring)



Water Harvesting System



Tractor & Reaper



Lawn Mowers



Chain Cutter & Brush Cutter



Purchase of New
Equipments
(30% Total Budget)

Expenditure on Equipment

Department	Expenditure In Rs.
Smart Class Rooms	39,00,000/-
Hostel	22,20,000/-
Library	6,00,000/-
Equipment for Diff able students	2,30,000/-
Software for Labs and Equipment for Examination	2,25,000/-
Sports Facilities	7,16,300/-
Equipment for Science Labs	27,63,700/-
Equipment for Arts Labs	13,45,000/-



Mess Dining Tables



Beds and Chairs



Refrigerator



Iron Grills / Barbed Wires

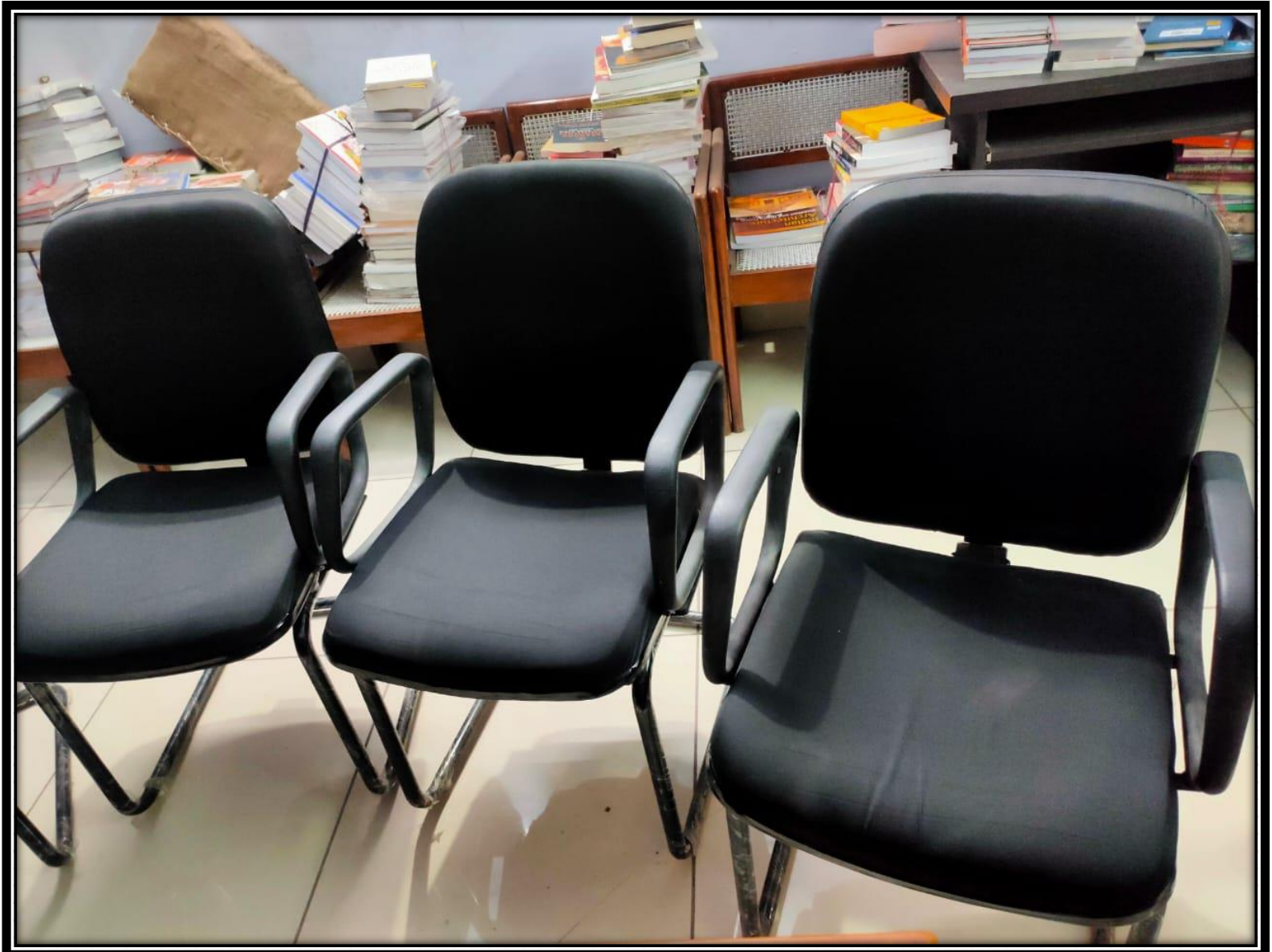


Hostel Grills

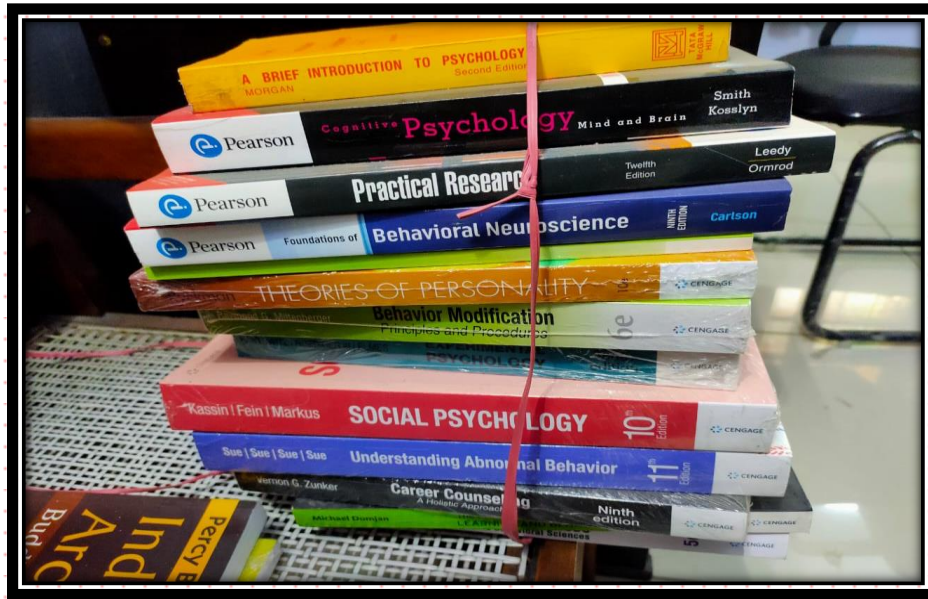




Chairs in Library



Books and Journals in Library



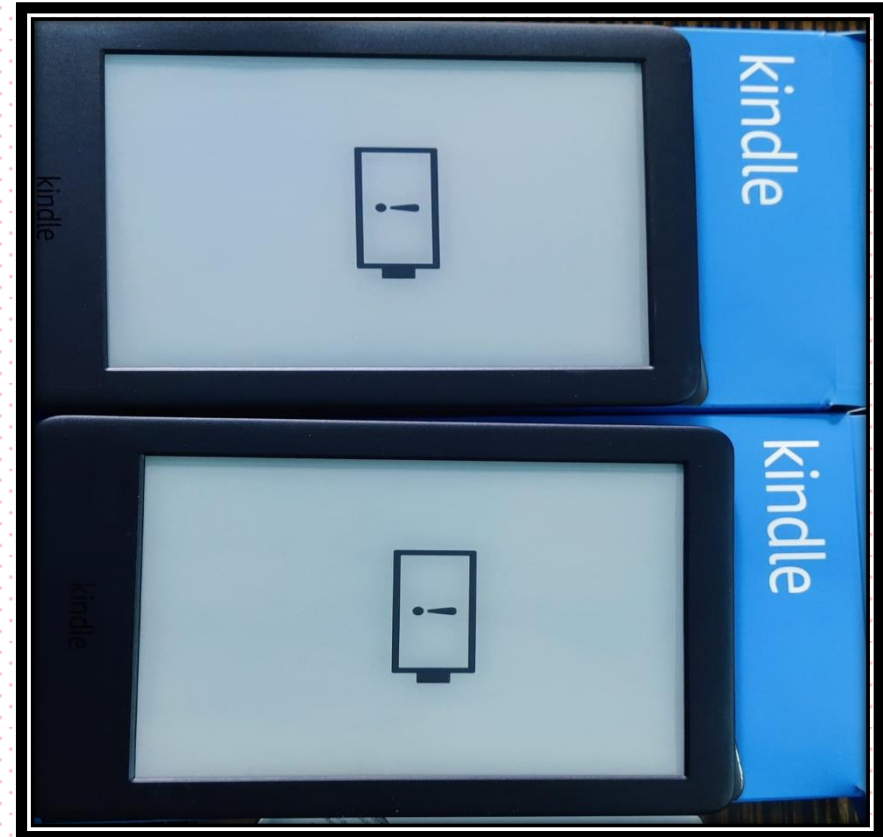
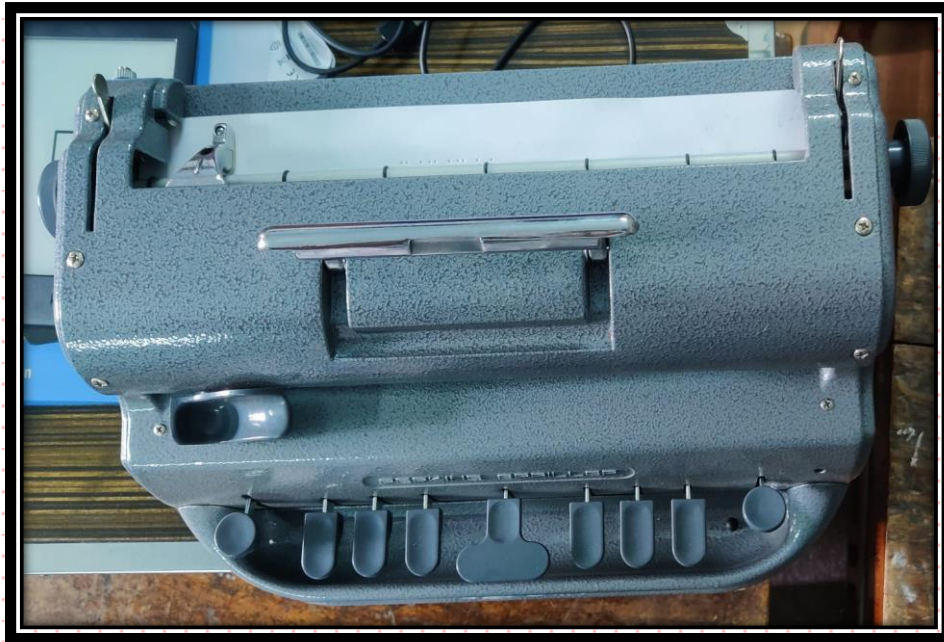
Photostat Machine in Library



Software & Equipments

Braille Typewriter & Daisy Book Reader

(For Visually Challenged Students)



Sports Facility

Hockey Sticks



Kabaddi Mats



Lab Equipments

Zoology Department

Egg Incubator



Compound Microscope



Trinocular Microscope



Binocular Microscope



Botany Department

Trinocular Microscope



Inverted Microscope



Home Science Department

Pizza Oven



Microwave Oven



Cake and Dough Mixer



Oven – 48L and 52L



Chemistry Department

Weighing Balance and Handheld Refractometer



Physics Department

Microscopes



Music Department

Sitar



Electronic Tanpura



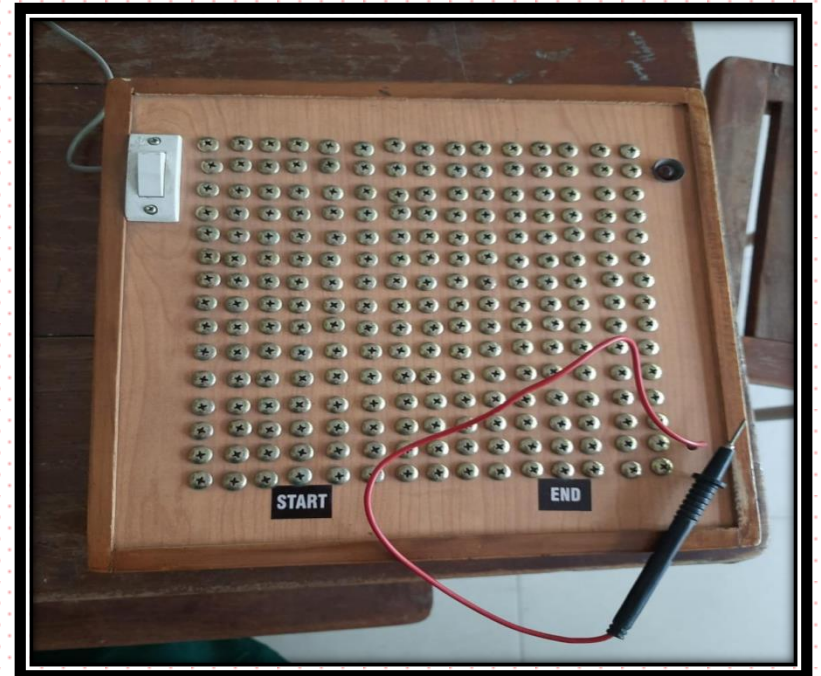
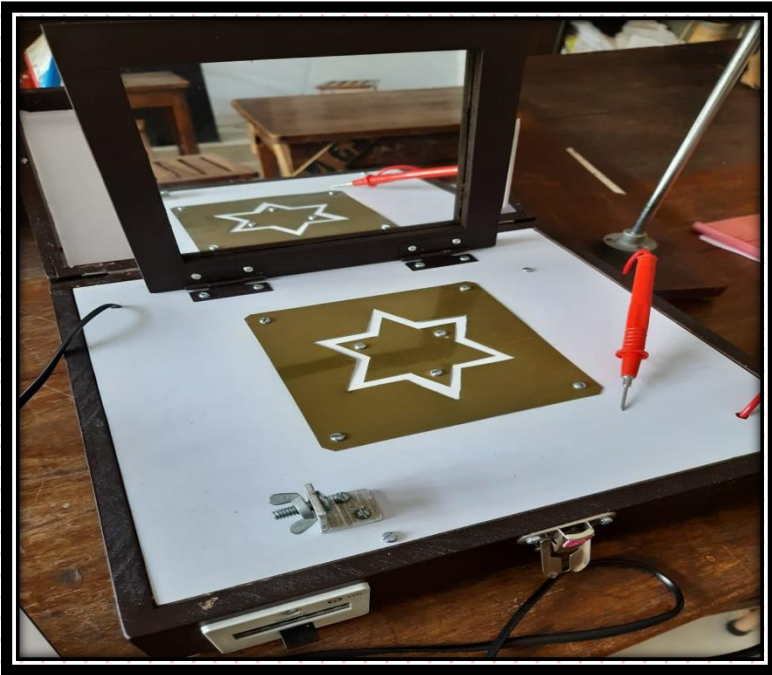
Harmonium



Dance Department

Psychology Department

Mirror Drawing Apparatus & Maze Learning



Geography Department

Digital Gadgets for Smart

Classrooms

Smart Board



Multimedia Projector & Sound Bar



Digital Teaching Device (DTD)





THANK YOU