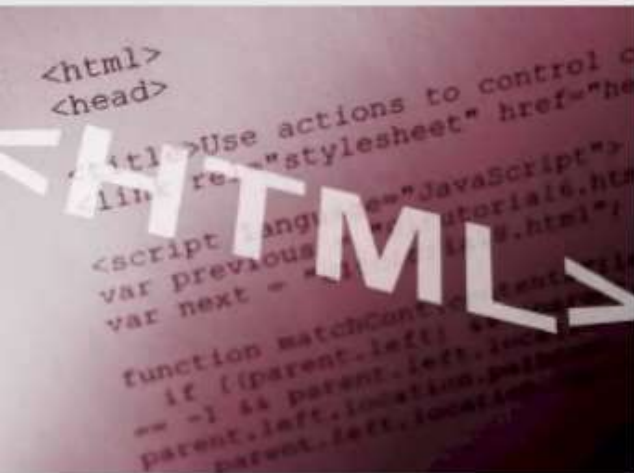
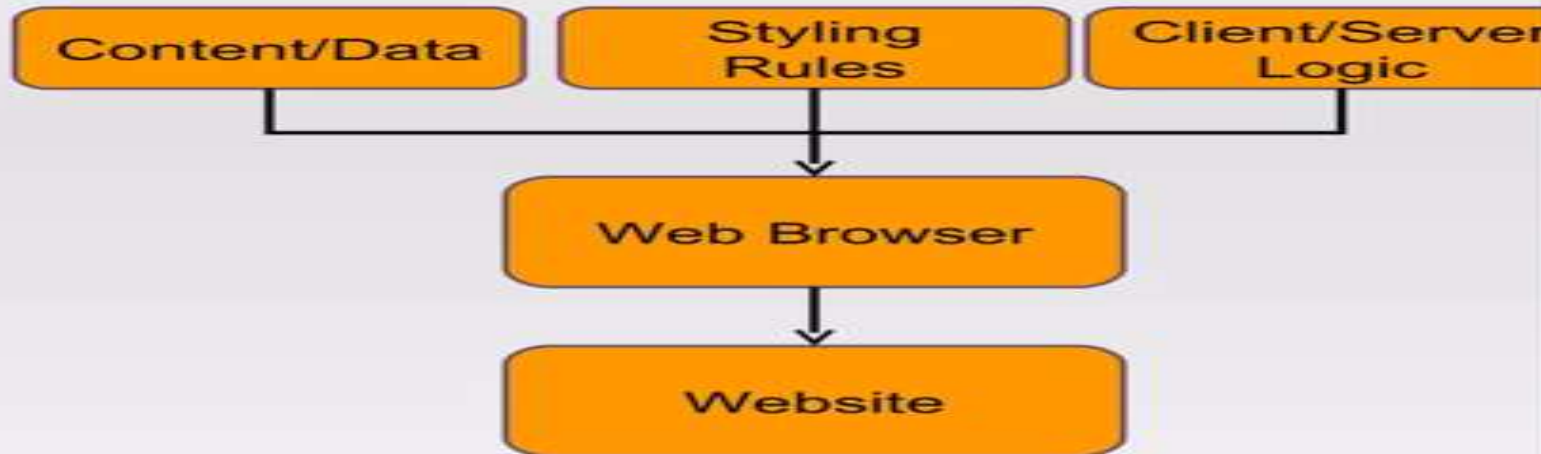


# Web Development

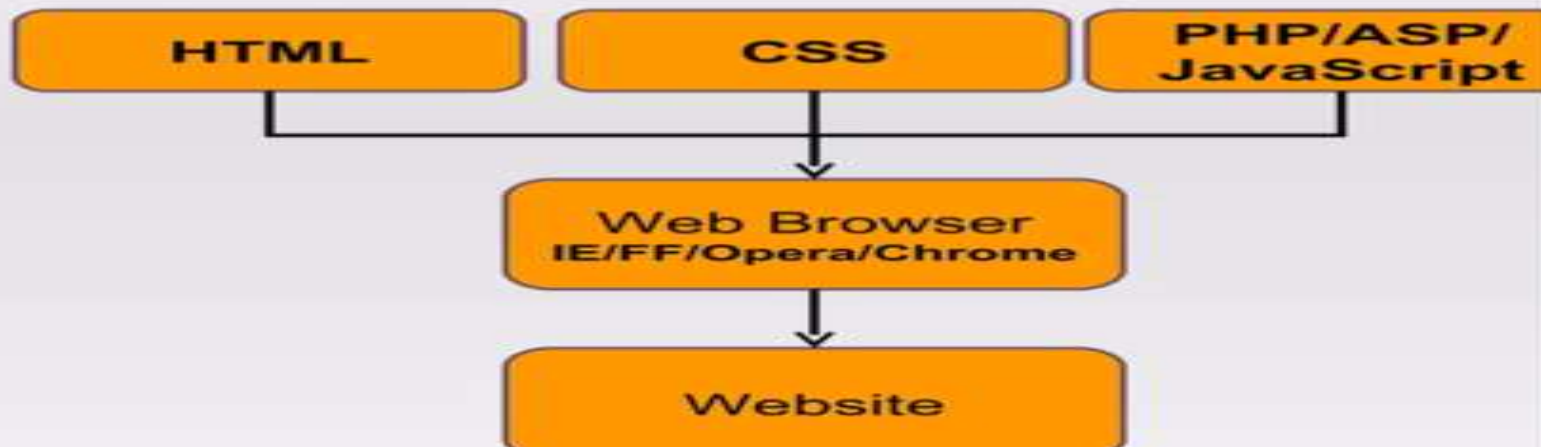


*JavaScript*

# A web page, broken down



# A web page, broken down



## ■ HTML = HyperText Markup Language

- ❖ A markup language designed for the creation of web pages and other information viewable in a browser.
- ❖ The basic language used to write web pages.
- ❖ File extension: .htm, .html

- `<html>`
- `<head>`
- `<title>My first web page</title>`
- `</head>`
- `<body>`
- `<h1>Hello everyone</h1>`
- `</body>`
- `</html>`

- A tag is : Non-hierarchical keyword or term assigned to a piece of information

**Document Tags:-** The tags that are required for every HTML page we create.

- Tag usually goes with pair: an open tag (<b>) and an end tag (</b>)

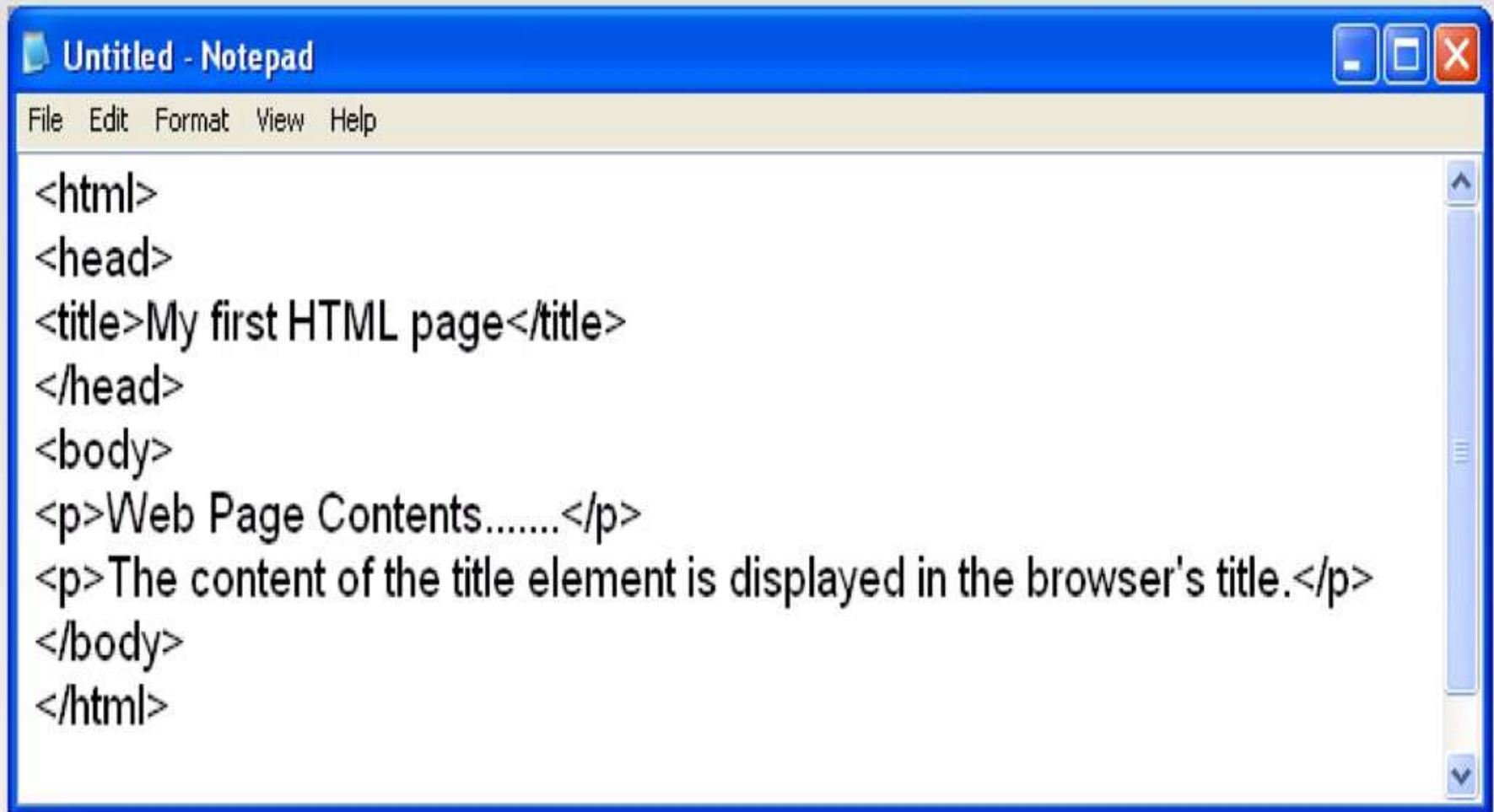
- < > - Opening Tag

- </ > - Closing Tag

- The element content is everything between the start and the end tag ( `<p>Hello</p>` )
- Some HTML elements have empty content( `<br />` )
- Most HTML elements can have attributes
- Its not case sensitive - `<p>` means the same as `<P>`

- **Open a text editor ( e.g. Notepad )**
- **Create your HTML document**
  - Head - not displayed with body
  - Body
- **Save the HTML (extension of .htm or .html)**
- **Display your HTML document in WWW browser window.**
- **Check your work and modify as necessary.**
- **Upload it on the Web.**

- The **body** element defines the document's body and contains all the contents of an HTML document, such as text, hyperlinks, images, tables, lists, etc.

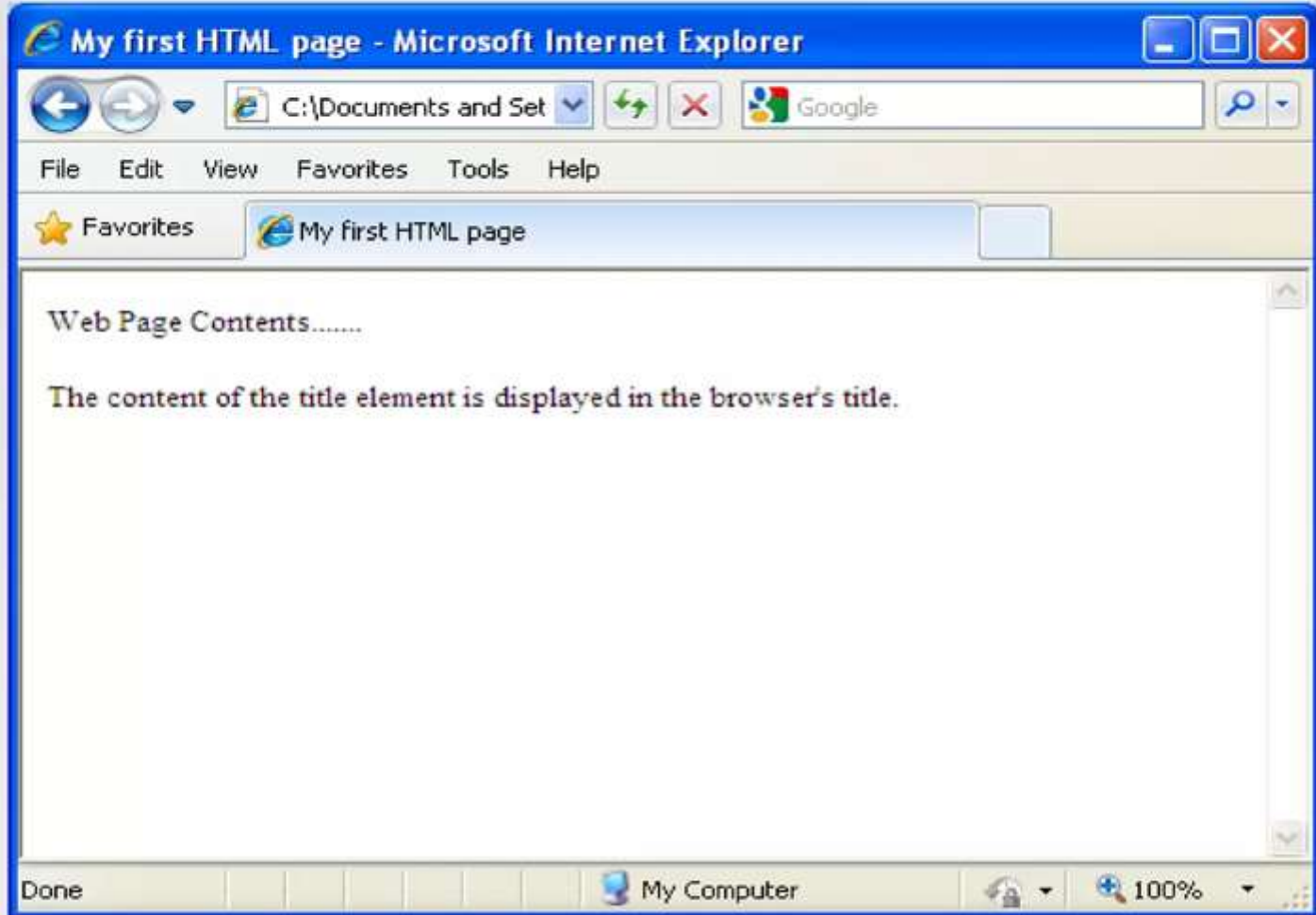


The image shows a screenshot of a Notepad window titled "Untitled - Notepad". The window has a blue title bar and a menu bar with "File", "Edit", "Format", "View", and "Help". The main text area contains the following HTML code:

```
<html>  
<head>  
<title>My first HTML page</title>  
</head>  
<body>  
<p>Web Page Contents.....</p>  
<p>The content of the title element is displayed in the browser's title.</p>  
</body>  
</html>
```



# output



- The `<img>` tag embeds an image in an HTML page.
- The `<img>` tag has attributes: `src` , `alt`, `height`, `width`.

### HTML code

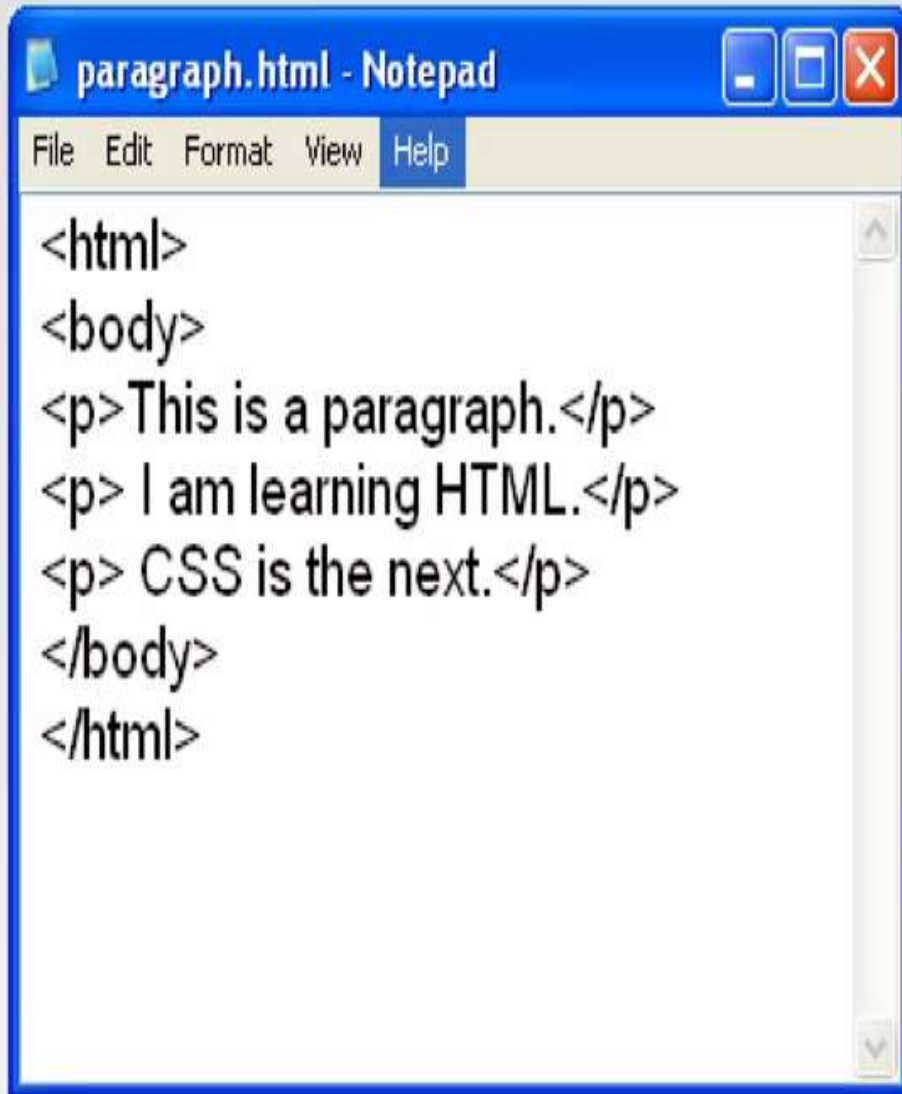
```

```

### output



# ■ The <p> tag defines a paragraph.



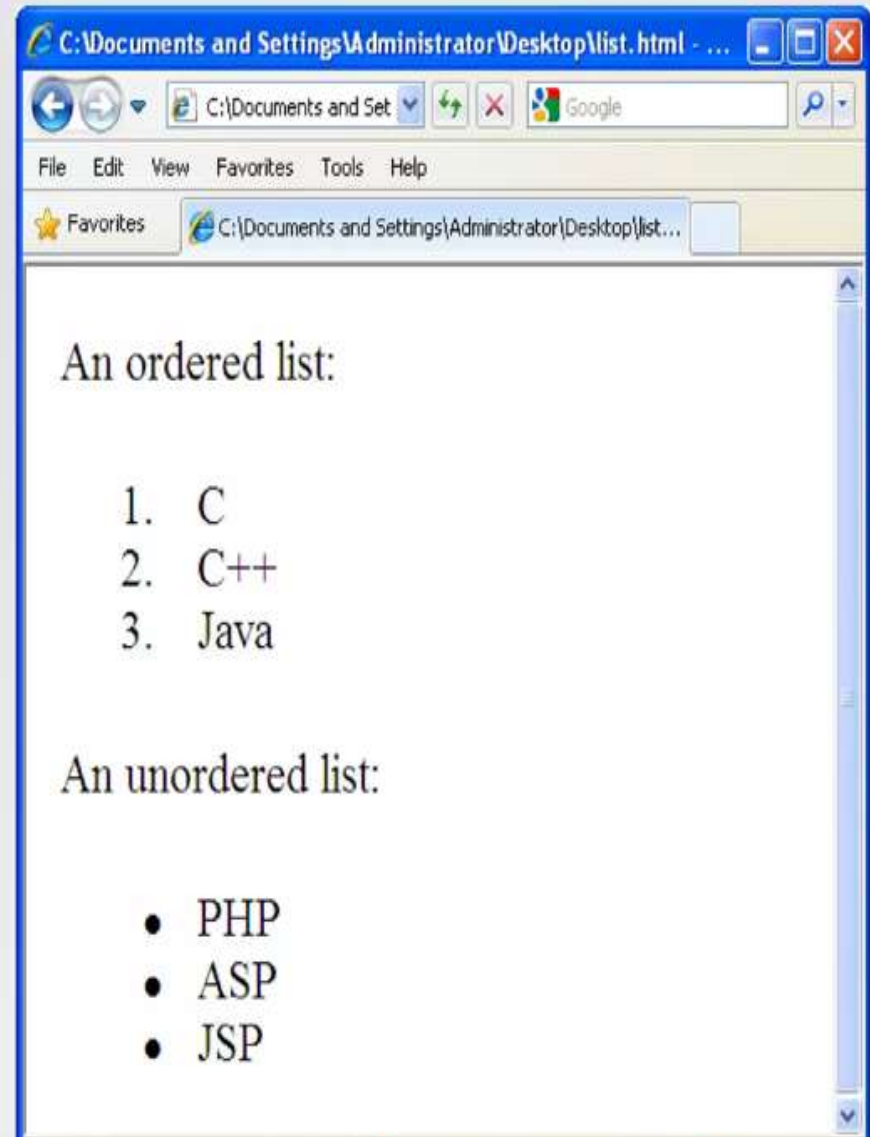
A screenshot of a Notepad window titled "paragraph.html - Notepad". The window has a menu bar with "File", "Edit", "Format", "View", and "Help". The text area contains the following HTML code:

```
<html>
<body>
<p>This is a paragraph.</p>
<p> I am learning HTML.</p>
<p> CSS is the next.</p>
</body>
</html>
```



# ■ The <li> tag defines a list item.

```
list.html - Notepad
File Edit Format View Help
<p>An ordered list:</p>
<ol>
  <li>C</li>
  <li>C++</li>
  <li>Java</li>
</ol>
<p>An unordered list:</p>
<ul>
  <li>PHP</li>
  <li>ASP</li>
  <li>JSP</li>
</ul>
```



- The `<a>` tag defines an anchor.
- Attribute for `<A ...>` `HREF = "URL"`  
HREF indicates the URL being linked to.

### A Hypertext link

```
< a href="http://www.google.com ">Google</a>
```

Output: [Google](http://www.google.com)

### A Email link

```
<a href="mailto:sandeep@gmail.com">Email me</a>
```

Output: [Email me](mailto:sandeep@gmail.com)

- The `<table>` tag defines an HTML table.
- A simple HTML table consists of the table element and one or more `tr`, `th`, and `td` elements.
- Attribute Values

Value	Description
<code>border</code>	Specifies the width of the borders around a table
<code>width</code>	Specifies the width of a table
<code>cellpadding</code>	Specifies the space between the cell wall and the cell content
<code>cellspacing</code>	Specifies the space between cells
<code>align</code>	Specifies the alignment of a table

```
table.html - Notepad
File Edit Format View Help

<table border="2" align="center"
cellpadding="5" cellspacing="5">
  <tr>
    <th bgcolor="#FFFF00">Year</th>
    <th bgcolor="#FFFF00">Sales</th>
  </tr>
  <tr>
    <td>2008</td>
    <td>Rs.120000</td>
  </tr>
  <tr>
    <td>2009</td>
    <td>Rs.160500</td>
  </tr>
</table>
```



# ■ Attribute Values

Value	Description
button	Defines a clickable button
checkbox	Defines a checkbox
password	Defines a password field. The characters in this field are masked
radio	Defines a radio button
reset	Defines a reset button. A reset button resets all form fields to their initial values
submit	Defines a submit button. A submit button sends form data to a server
text	Defines a one-line input field that a user can enter text into. Default width is 20 characters

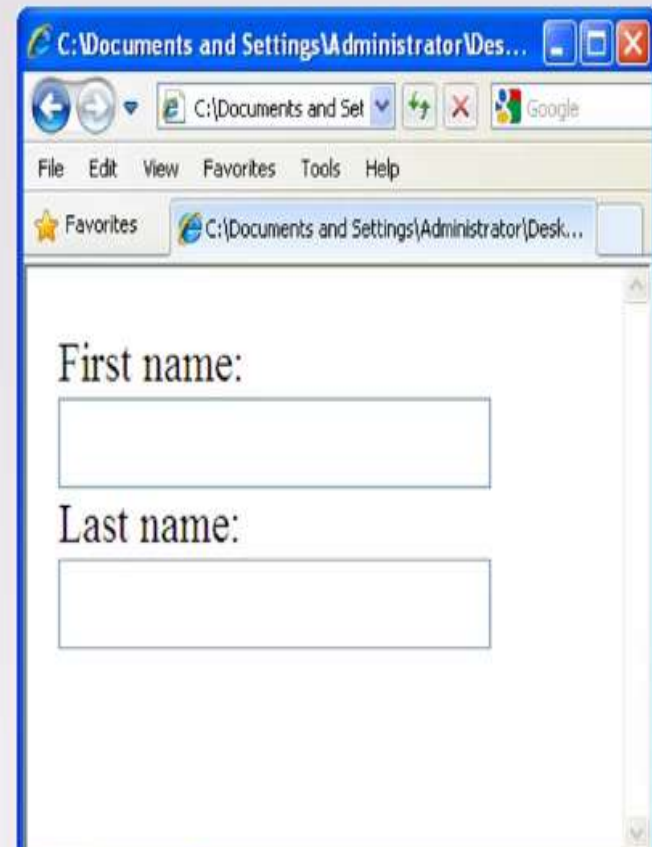


## ■ Text Input Fields

- Used when you want the user to type letters, number, etc.



```
<form>
First name:<br/> <input type="text"
name="firstname">
<br/>
Last name:<br/> <input type="text"
name="lastname">
</form>
```

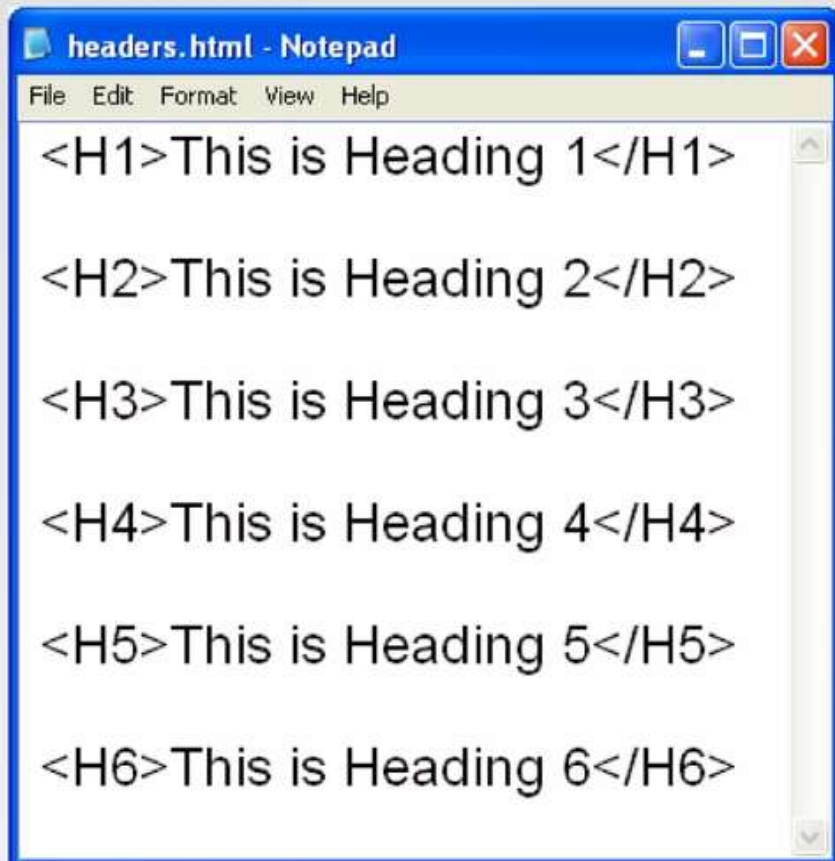


## ■ Checkboxes and Radio Button

```
checkradio.html - Notepad
File Edit Format View Help
<form>
<input type="checkbox" name="sports"
value="Cricket" /> Cricket<br />
<input type="checkbox" name="sports"
value="Soccer" /> Soccer<br /><br />
<input type="radio" name="gender"
value="M" />Male
<br />
<input type="radio" name="gender"
value="F" />Female
</form>
```

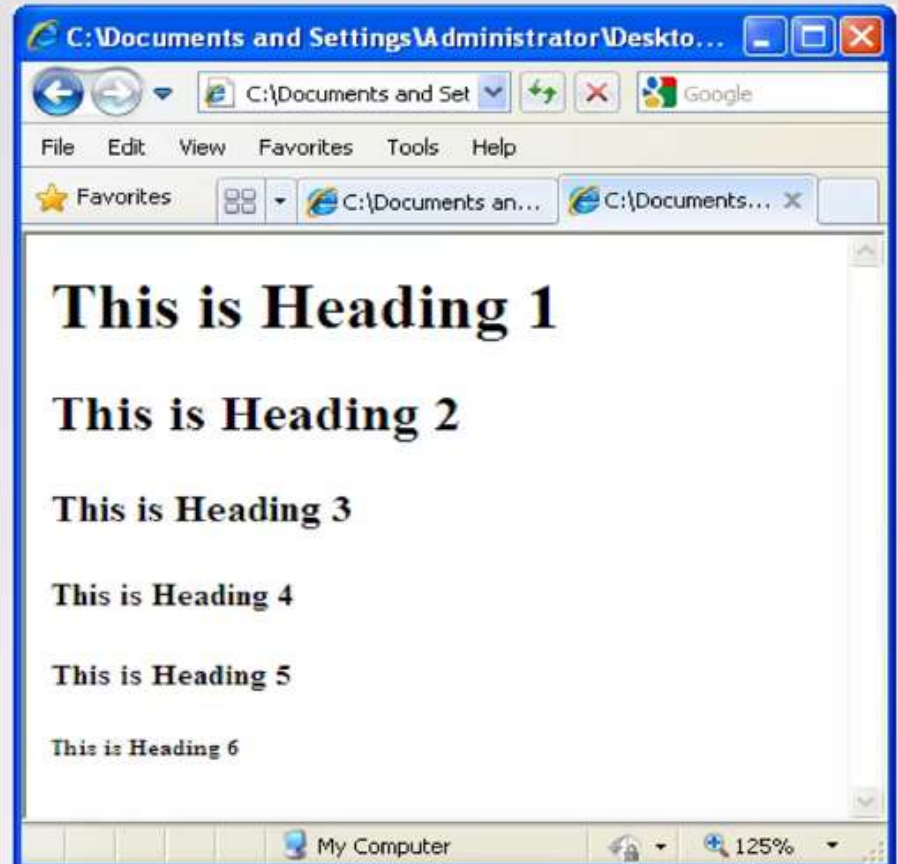


- **<h1> defines the largest heading and <h6> defines the smallest heading.**



A screenshot of a Notepad window titled "headers.html - Notepad". The window contains the following HTML code:

```
<H1>This is Heading 1</H1>  
<H2>This is Heading 2</H2>  
<H3>This is Heading 3</H3>  
<H4>This is Heading 4</H4>  
<H5>This is Heading 5</H5>  
<H6>This is Heading 6</H6>
```



**THANKS**

**BY-PG DEPARTMENT OF  
COMPUTER SCIENCE AND  
APPLICATIONS**